

CV-490-S

Check-valve G 1" (with spring)

1. Description

Check-valve of robust, compact and simple design, based on a proven and reliable technology. The spool is energized ensuring that the check-valve remains closed under low pressures up to 0.5 [bar]. Very few parts compose this check-valve; the result is a lightweight valve with a high reliability.

2. Advantages

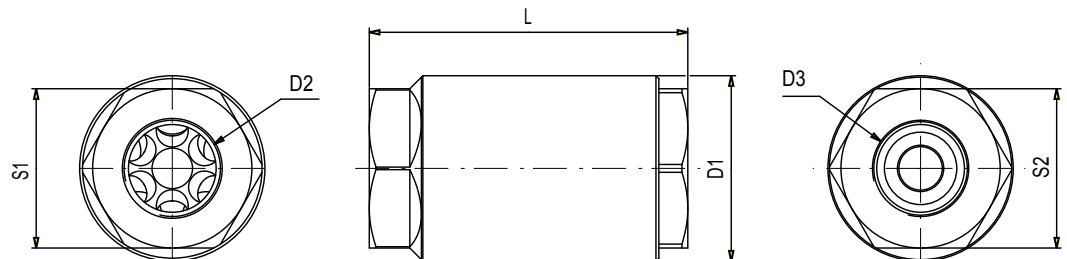
- + Easy maintenance
- + Swiss quality

3. Picture



4. Dimensions (mm)

D1	64 [mm]
D2	G 1"
D3	G 1"
L	110 [mm]
S1	55 [mm]
S2	55 [mm]



5. Technical Data

Reference	CV-490-S (with spring)
Function	Check-valve G 1"
Operating pressure	4 ... 40 bar
Maximum inlet pressure	40 bar
Nominal diameter	25 mm
Operating temperature	+5° ... +55° C
Inlet port size	G 1"
Outlet port size	G 1"
Maximum air flow	2200 [Nm ³ /h]
Materials	Body : Coated aluminium Spool : Plastic, FDA compliant
Net-Weight	0.64 kg