

CV-707

Check-valve G 1"1/4

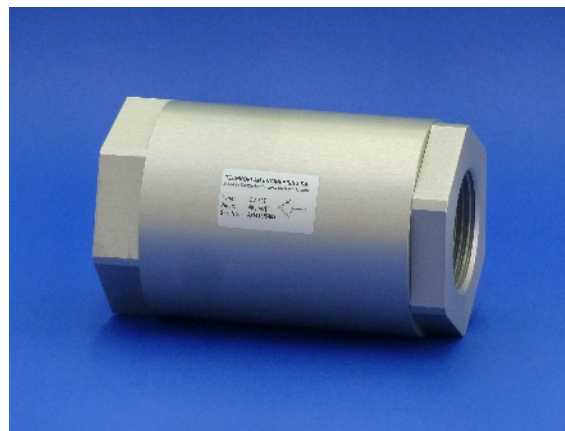
1. Description

Check-valve of robust, compact and simple design, based on a proven and reliable technology. No spring is used. Very few parts compose this check-valve; the result is a lightweight valve with a high reliability.

2. Advantages

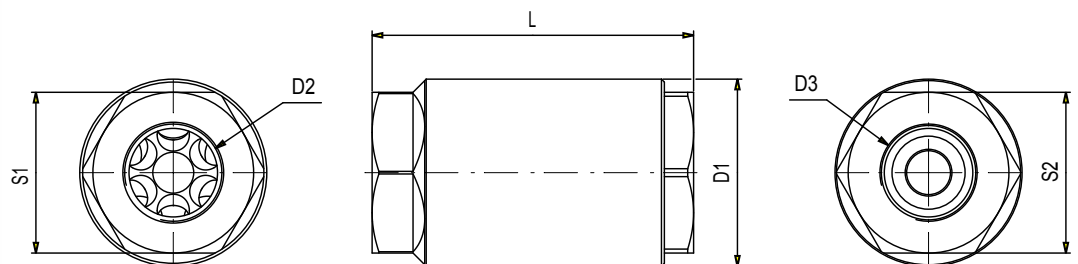
- + Easy maintenance
- + Swiss quality

3. Picture



4. Dimensions (mm)

D1	73 [mm]
D2	G 1"1/4
D3	G 1"1/4
L	120 [mm]
S1	65 [mm]
S2	65 [mm]



5. Technical Data

Reference	CV-707
Function	Check-valve G 1"1/4
Operating pressure	4 ... 40 bar
Maximum inlet pressure	40 bar
Nominal diameter	30 mm
Operating temperature	+5° ... +55° C
Inlet port size	G 1"1/4
Outlet port size	G 1"1/4
Maximum air flow	3200 [Nm ³ /h]
Materials	Body : Coated aluminium Spool : Plastic, FDA compliant
Net-Weight	0.85 kg