

D-3203

Black Flow Regulator G 1"1/2

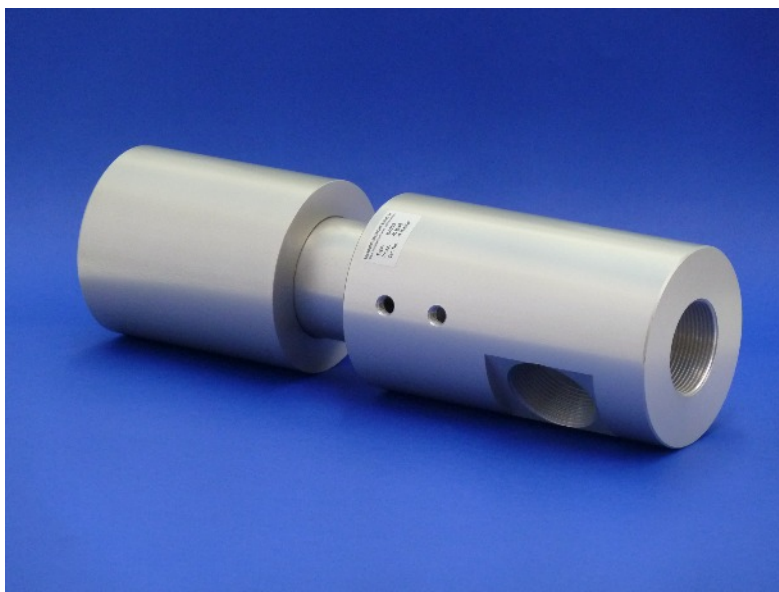
1. Description

This back-flow regulator of simple and robust design can be used in a very large number of applications. The back-flow regulator opens progressively with the increase of the upstream pressure (inlet 1), allowing to have a regulated and constant downstream pressure (outlet 2). A check-valve function is integrated to the back-flow regulator. This avoids any downstream air (outlet 2) to go back if its pressure is higher than the upstream pressure (inlet 1) when the valve is opened.

2. Advantages

- + Easy to adjust
- + Swiss quality

3. Picture



4. Technical Data

Reference	D-3203
Function	Black-flow regulator G 1"1/2
Operating pressure	4 ... 16 bar
Maximum inlet pressure	16 bar
Nominal diameter	32 mm
Operating temperature	+5° ... +55° C
Inlet port size	G 1"1/2
Outlet port size	G 1"1/2
Gauge ports	G 1/4"
Maximum air flow	2300 [Nm ³ /h]
Materials	Body : Coated aluminium Piston & seal : Plastic, FDA compliant
Net-Weight	5.1 kg

5. Dimensions (mm)

D1	99 [mm]
D2	99 [mm]
D3	G 1"1/2
D4	G 1"1/2
D5	G 1/4"
L1	332 [mm]
L2	292 [mm]
L3	170 [mm]
L4	58 [mm]
L5	115.5 [mm]
L6	29.7 [mm]
A1	45 [°]

